



Overview of the FADN organization in Italy

S.Marongiu

CREA Policy and Bioeconomics - Via Barberini, 36 – 00187 Roma

Graphics: **A. Di Cesare**



A general overview in terms of

- Main aims and structure of the Italian FADN
- Brief history
- Data collection flows
- Specific features of the survey in Italy

The Italian FADN

The Italia FADN is named RICA (Rete di Informazione Contabile Agricola). It exists since 1965, when INEA (ex CREA) was appointed as Liaison Agency.

Today: CREA Policy and Bioeconomics → FADN Liaison Agency in Italy.

The headquarter is in Rome (Lazio).

FADN is managed through 20 Regional offices that collect data at regional level. The matching is done at national level (technical unit in Pescara) before the upload on RICA1.

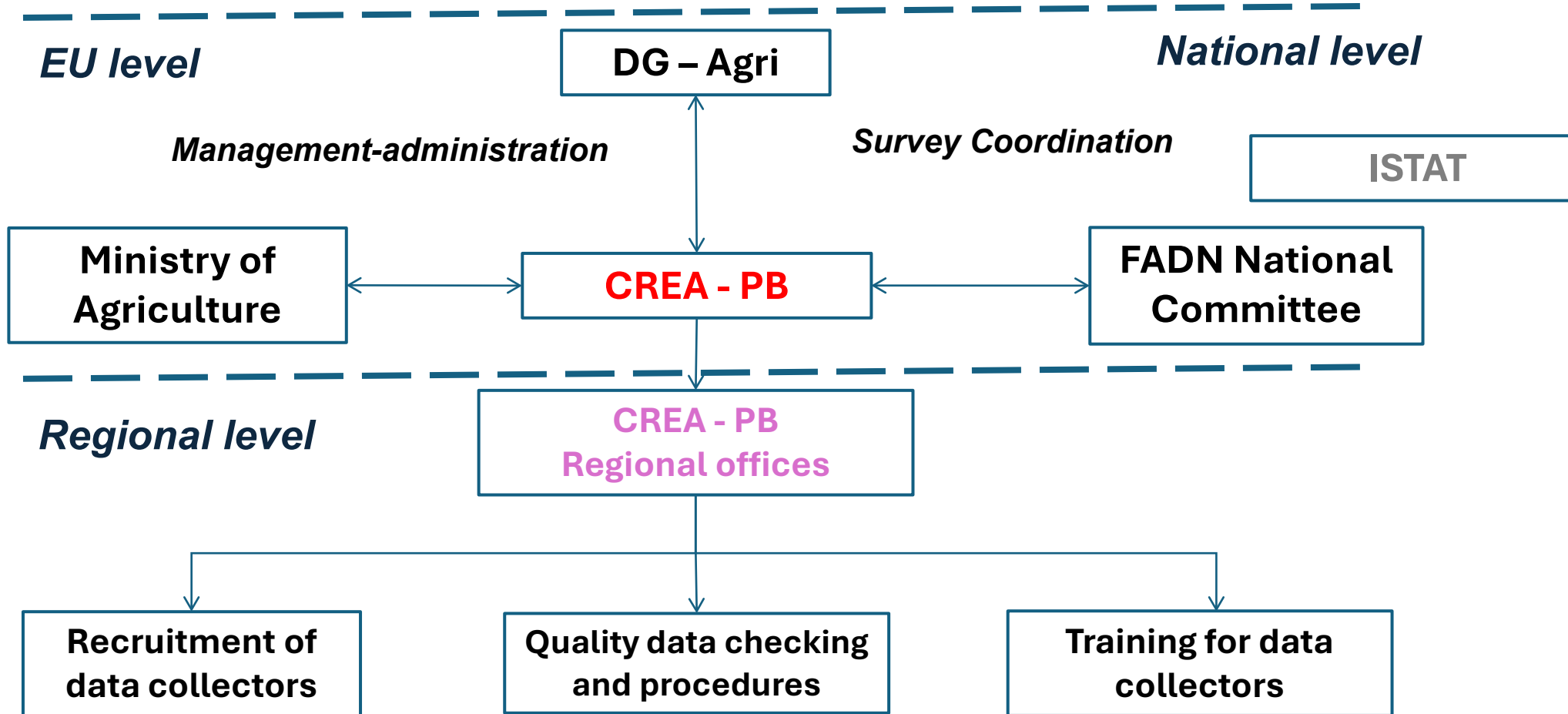


The Italian FADN is a complex survey system: the main aim is to provide data for the EU FADN but there are other important objectives:

- Improve the accounting practices in agriculture (for advisors, technicians, farmers, students, etc.)
- Use the data for research and institutional analysis
- Support for the increasing informative needs of the national research
- Support to the national statistics in agriculture



The Italian FADN



FADN Staff in Italy



Valle D'Aosta



C. Pilan

Piemonte



G. Peiretti

Lombardia



T. Prandi

Bolzano



S. Marongiu

Trento



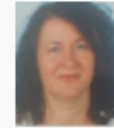
S. Marongiu

Veneto



B. Bimbati

Friuli V. Giulia



G. Zilli

Liguria



N. Marchetti

Emilia-Romagna



F. P. Marseglia

Toscana



A. Bianchi

Marche



A. Bodini

Umbria



L. Turchetti

Lazio



I. Maffeo

Abruzzo



S. Palumbo

Molise



M. Rubertucci

Campania



G. Panella

Puglia



D. Carone

Basilicata



T. Potenza

Calabria



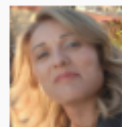
V. Carè

Sicilia



D. Macaluso

Sardegna



F. Floris

Resp. nazionale



L. Cesaro

Gruppo coord.



A. Scardera

Gruppo coord.



M. Martino

Gruppo coord.



A. Giampaolo

Elaborazione dati



M. Santangelo

Verifiche e controlli



F. Mari

Team Sviluppo



S. Cafarelli

Team Sviluppo



C. Di Laora

Team Sviluppo



M. Mambella

Team Sviluppo



M. Fanelli

Team Sviluppo



A. Di Clemente

Team Sviluppo



D. Marulli

Web designer



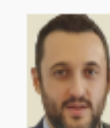
A. Di Cesare

Ufficio Statistica



C. Cardillo

Ufficio Statistica



G. Gabrieli



Le informazioni e i dati contenuti in questo documento possono essere riprodotti liberamente, secondo le CC BY-NC-SA, a condizione che venga citata la fonte e non vengano manipolati o distorti.

Altri ricercatori, tecnici ed amministrativi del CREA-PB partecipano alla conduzione dell'indagine, sia a livello nazionale che regionale

rica@crea.gov.it



The Italian FADN



1969 → first accounting year (12 accounting offices coordinating 350 data collectors for 4,000 farms. The first results have been published in 1972)

1978 → one accounting office for every region and 12,000 farms

1993 → The Italian FADN has been interested by a renovation: new informative needs from the EC, more dissemination activities, the use of FADN as an important source of information for economic and social analysis, the use of FADN for the ex-post evaluation of the CAP measures. Software: PEGASO (Continea)

1994 → The Italian FADN became a part of the National Statistical System

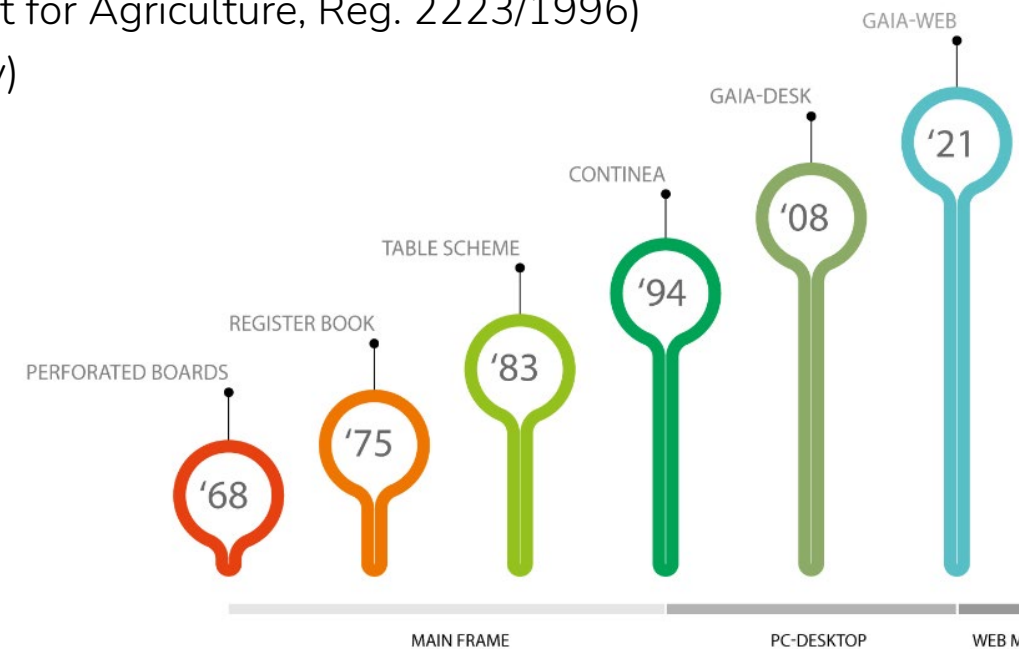
1994 → INEA became a member of PACIOLI

1997 → Collaboration with ISTAT for the survey of EAA (Economics Account for Agriculture, Reg. 2223/1996)

2008 → Adoption of the software GAIA-desk (new accounting methodology)

2010 → New applications and tools for the data collection, data use, etc.

2025 → GAIAWeb



RICA website (rica.crea.org.it)



Consiglio per la ricerca in agricoltura e l'analisi dell'economia agraria - Centro di ricerca in Politiche e Bioeconomia



COS'È

DATI

PRODOTTI

PUBBLICAZIONI

CONTATTI



La RICA è uno strumento indispensabile per la ricerca e l'innovazione in agricoltura



Potenziare lo sviluppo rurale in Italia: i ...

04 settembre 2024



Harmonizing economic and environme...

02 luglio 2024



Cosa pensano gli agricoltori della PAC?

02 luglio 2024

<< Tutte le news >>

GAIA website (gaia.crea.org.it)



Consiglio per la ricerca in agricoltura e l'analisi dell'economia agraria - Centro di ricerca in Politiche e Bioeconomia



[Cos'è Gaia](#)

[Download](#)

[Guida](#)

[Contatti](#)

[RICA](#)

[Formazione](#)

[News](#)

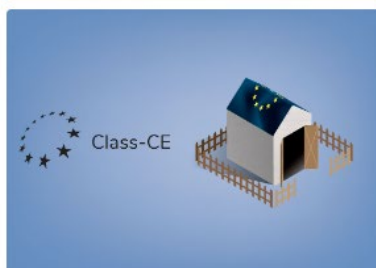
[Account RICA](#) ▼



Rete d'Informazione Contabile Agricola

Coltiviamo La Cultura Della Contabilità Per Gli Imprenditori Agricoli

Tools and services



The Italian FADN provides several instruments (tools, softwares, web application) realized by the IT Development team of CREA-PB.

GAIA is the software used for data collection.

Several instruments are connected/derived by GAIA.

Tools and services



Farm Register P.A.



- Farm Type classification
- Farms monitoring
- Survey management
- Sample monitoring



Yield, prices, etc.

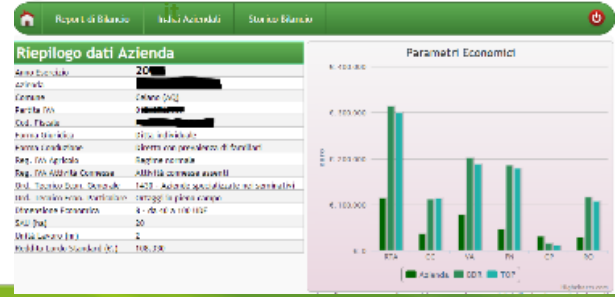
- Farm level quality check
- Quality check for farm groups



GAIA-TEST



cruscottoaziendalegaia.crea.gov.



Benchmark con gruppi omogenei



Field of observation (monitoring)

Farm riclassification
Farm classification (for the new farms)



- Data entry
- Formal check
- Flow accounting
- Reporting



Documentazione RICA
Sito della documentazione dei software RICA

Handbooks, guidelines, documents, etc.



rica.crea.gov.it/APP/albo_rilevatori

Bacheca Utente

Registrazione Domanda

Tecnologia di operatore
PERSONA FISICA PERSONA GIURIDICA



helpdeskrica.crea.gov.it

ticket / email

Online Assistance

Tickets

ID	TITOLO	Stato	Proprietario	Assegnato A	Tipo	Categoria	Priorità	Creato il	Aggiornato il
#2791	Apertura esercizio contabile 2022 da parte di azienda agricola fuori indagine	Atteso	Giancarlo Piretti	Stefano Calabrese	Problema	Software	Alta	09/24/mar/2022 09:29	09/24/mar/2022 09:29
#3225	Integrazioni critiche per Gata e Galabri	Atteso	Donato Carone	Matteo Marino	Suggerimento	Metodologia	Alta	09/20/mar/2022 15:31	09/20/mar/2022 15:31

CORSI DI FORMAZIONE

Il CREA-PIB mette a disposizione dei rilevatori delle Indagini RICA o REA corsi di formazione formativi organizzati dalle sedi regionali, che vengono pubblicati periodicamente in questa sezione. La partecipazione ai corsi consentirà di consegnare, dopo il superamento di un test da effettuare attraverso la compilazione del questionario online, l'attestato di conoscenza della metodologia.

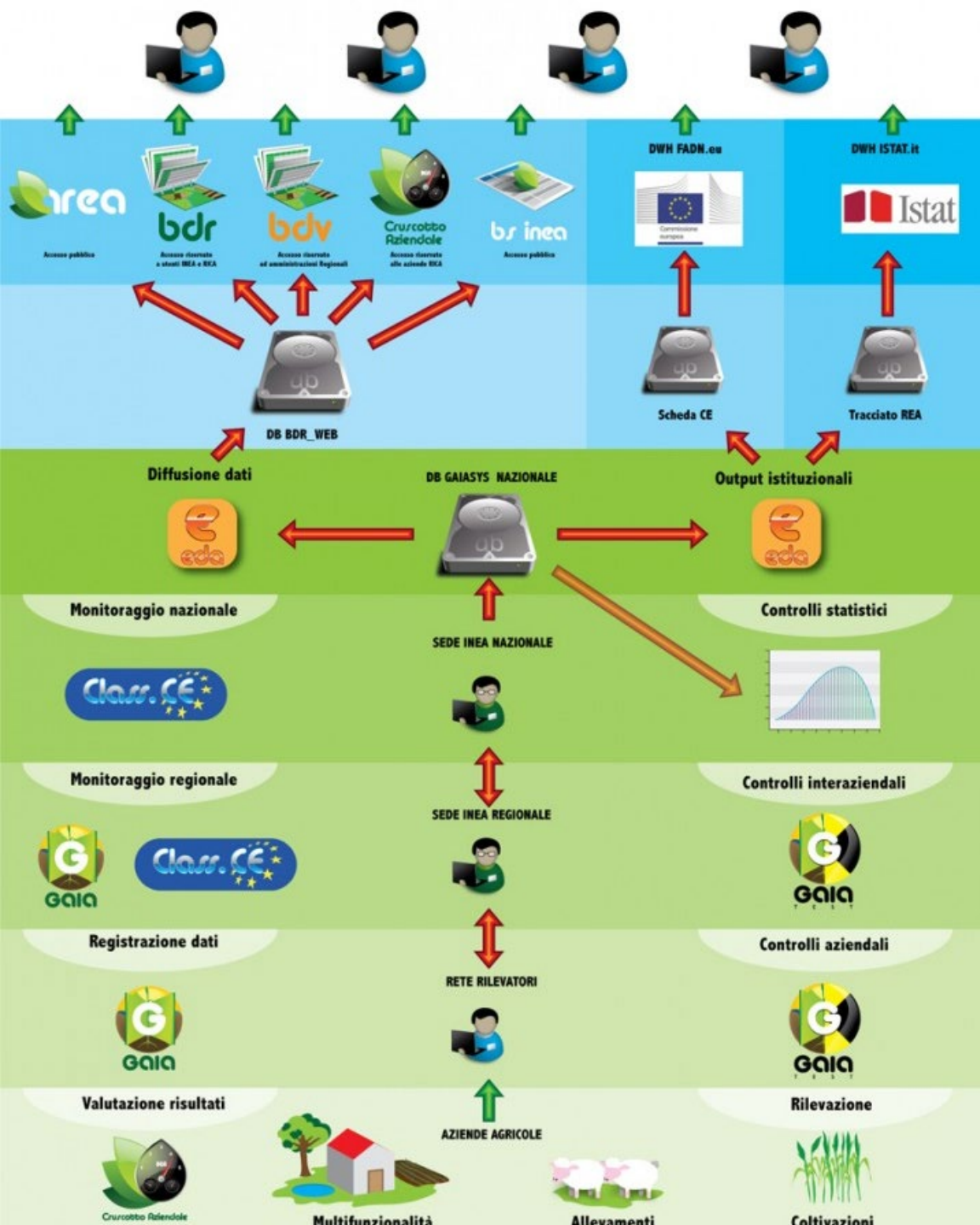


Training and updating course

Test (3 modules)



Certificate (Knowledge of FADN methodology)



Final users:

- Research, Universities
- Public administrations
- Agricultural Organizations
- Farmers or other users

IT FADN is stored in a Database and elaborated in a Datawarehouse

EU FADN is stored in a EU Database, in Datawarehouse (platform AGRIDATA)

The IT staff of FADN produces 2 archives

1. National Farm Return (National Database)
2. RICA1 Farm Return for European Commission (DB EU) (National monitoring)

IMPORTANT: ITALY COLLECTS MORE VARIABLES THAN THE FARM RETURN (FOR NATIONAL PURPOSES)

Data collectors send the archives to the Regional office, responsible of FADN at a territorial level. They check the data and finalize the quality control with a specific set of quality tests (regional monitoring)

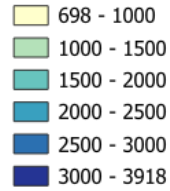
Data collectors go to the farmers to gather all the information required by the Farm Return. They can go more than one time. Some information are available on administrative databases (for instance public subsidies). First level of control.

- Definition of the list of farms from the National Selection Plan
- Recruitment of the data collectors (single or associations)
- Distribution of the farms among all the data collectors

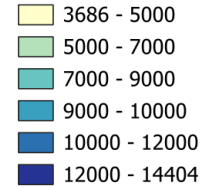


Farms in the Italian FADN

Farms and Financial Statements from 2008 to 2022



35,400 farms
(countdistinct)



163,300
Financial
Statements

Primo anno RICA	2008	2009	2010	2011	2012	2013	2014	2015	2016	2017	2018	2019	2020	2021	2022	inc. EC '22
2008	11.389	10.447	7.991	7.212	5.759	5.084	3.719	3.110	2.760	2.531	2.203	1.799	1.644	1.724	1.602	14,5%
2009		675	450	385	302	247	188	155	149	135	124	108	99	97	89	0,8%
2010			2.811	2.495	1.833	1.613	1.105	831	716	643	530	472	431	411	377	3,4%
2011				1.243	804	738	752	430	386	362	314	286	267	237	220	2,0%
2012					2.562	2.259	1.260	912	791	738	658	597	552	508	475	4,3%
2013						1.457	963	654	571	516	447	385	343	314	290	2,6%
2014							2.586	1.916	1.637	1.474	1.306	1.114	1.014	916	825	7,4%
2015								1.561	1.047	906	751	631	581	531	483	4,4%
2016									2.096	1.642	1.275	1.163	1.028	940	858	7,7%
2017										1.845	1.493	1.321	1.215	1.104	1.008	9,1%
2018											1.668	1.413	1.245	1.126	1.008	9,1%
2019												1.516	1.349	1.198	1.058	9,5%
2020													993	833	744	6,7%
2021														1.100	982	8,9%
2022															1.065	9,6%
Totale EC	11.389	11.122	11.252	11.335	11.260	11.398	10.573	9.569	10.153	10.792	10.769	10.805	10.761	11.039	11.084	100%

25% of FADN sample includes farms that collaborate with Italian FADN for over 10 years.

Recruitment of data collectors



The screenshot shows the header of the RICA website. On the left is the RICA logo (Rete d'Informazione Contabile Agricola). In the center is the title 'Elenco Operatori Economici' with the subtitle 'Elenco dei fornitori del servizio di rilevazioni dati per indagini statistiche del CREA-PB'. On the right is the CREA logo (Consiglio per la ricerca in agricoltura e l'analisi dell'economia agraria). Below the title is a navigation bar with a home icon, 'Istruzioni', 'Albo', and 'Affidamenti'. On the far right are 'Accedi' and 'Nuovo utente' buttons.

650 data collectors are involved in the Italian FADN.

- Individual (advisors, agronomists)
- Producer organizations

There is a procedure to become a data collector:

- Submission of the request to a specific Commission (who validate the requirements like the specific education in economics or agriculture/agronomy)
- Attendance of a specific training organized by CREA-PB at regional level (12-18 hours)
- Final examination (3 modules, 10 questions per module)
- Renewal each year, attendance of an updating course
- Assistance and communication with the FADN regional responsible
- The Register is public (website) - 437 [registrations](#) and 2,593 [contract](#) data-collector in 2023

Recruitment of data collectors



CORSI DI FORMAZIONE

Il CREA-PB mette a disposizione dei rilevatori delle indagini RICA e REA corsi di formazione frontali organizzati dalle sedi regionali, che vengono pubblicati periodicamente in questa sezione. La partecipazione ai corsi consentirà di conseguire, dopo il superamento di un test da effettuare attraverso la compilazione del questionario online, l'attestato di conoscenza della metodologia.

<https://gaia.crea.gov.it/#CorsiFormazione>



BASILICATA

📅 05 giu 2024 - 31 lug 2024

📌 **Iscrizioni Chiuse**

🕒 Durata (ore): 16

👥 Nr. max partecipanti: 4

INFO



VENETO

📅 29 mag 2024 - 29 mag 2024

📌 Chiusura Iscrizioni: 28 mag 2024

🕒 Durata (ore): 4

👥 Nr. max partecipanti: 20

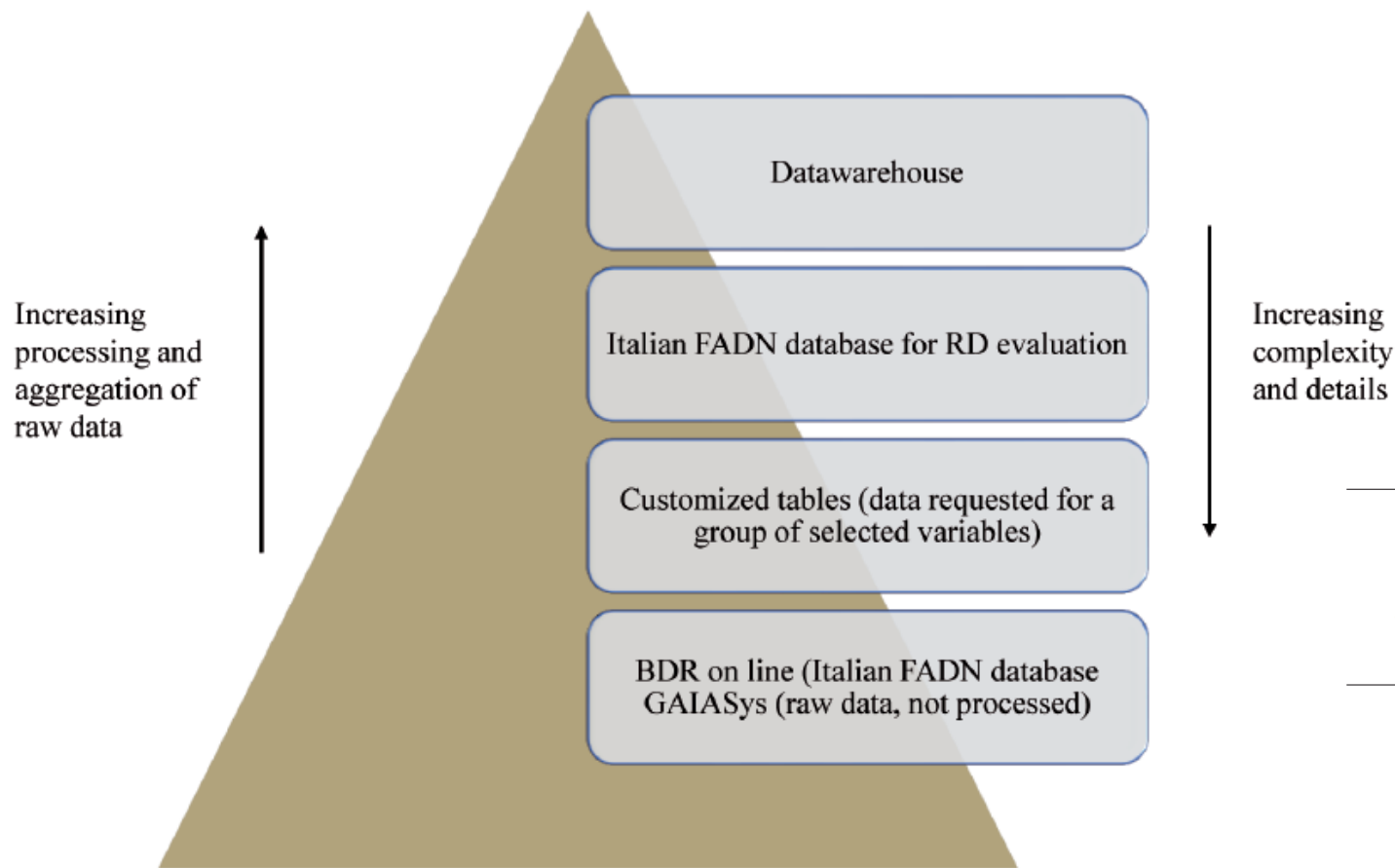
INFO

Training and updating courses are published every year (in January-February before the data collection starts) in a specific website (date and general programme).

Who is interested can participate to the courses and then submit the registration in the Data collectors Register.

- Find data collectors is not always easy
- The training/updating permits a continuous training of the data collectors.

Use of data



Source: own elaboration.

Economia agro-alimentare /
Food Economy
An International Journal on Agricultural and Food Systems
Vol. 23, Iss. 3, Art. 10, pp. 1-21 - ISSN 1126-1668 - ISSNe 1972-4802
DOI: 10.3280/ecag3-0a12770



Use and users of FADN data in Italy

Sonia Marongiu^{*a}, Barbara Bimbati^a, Mauro Santangelo^a

^a CREA, Council for Agricultural Research and Economics,
Research Centre for Agricultural Policies and Bioeconomy

Use of data (access)



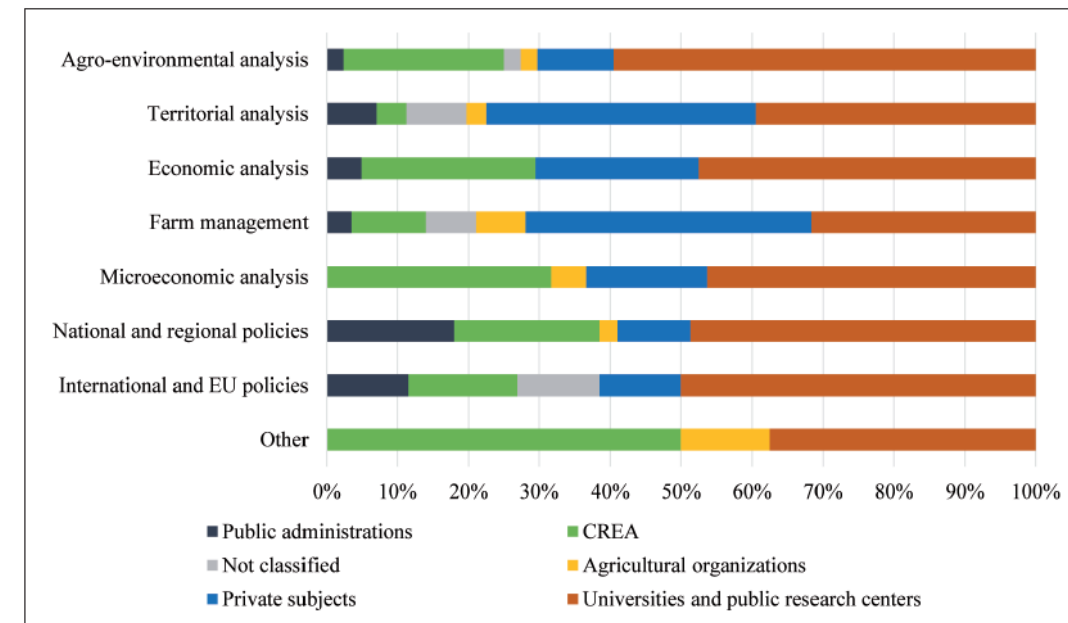
FADN data in Italy are available with different level of access and detail:

- **GAIAsys** → is the raw fadn dataset of primary data containing all the information gathered directly from the farm: data are not processed or aggregated. GAIAsys is used for research purposes when a high detail is required
- **FADN Database online** (*Banca Dati RICA*) where information can be downloaded as data or elaborated as reports by Region and year. The access is limited to enabled users (password) or under an agreement (as the case of Universities, research centers or public administrations). Only CREA's internal users and all the external stakeholders belonging to the National Statistical System (sistan) are automatically enabled.
- **FADN Database for evaluation** restricted to the Regional Statistical Offices that can download only the data included in its own regional dataset.
- **Customized tables**: users who need specific variables to perform their analysis can ask FADN data submitting a [request form to CREA](#), processed in few days.
- **Prepackaged downloaded tables (public Datawarehouse <https://arearica.crea.gov.it/>)**. The aggregation level is very high and there are few details regarding the single variables.

Use of data



- Reports (published by CREA)
 - Use of FADN for the analysis of market policies and of future scenarios of evolution of agricultural sector (*CREA-PB Yearbook, Report on State of Italian Agriculture, ItaConta, Regional FADN Report*)
- Data, methodologies and analysis
 - Impacts of EU Common Agricultural Policies: i.e. after 2013 and after 2020 for the analysis of the redistribution of direct payments between Italian Regions and impacts on farm income (per regions /farming type), simulation of the effects of the new CAP
 - Research: analysis of the efficiency of farms, economic and econometrics models, scenario analysis
 - National strategic sectorial plans (cereals, olive oil, chesnuts, other products)
 - Using the FADN for the evaluation of rural development policies
 - Risk Management analysis
 - Organic agriculture
 - Justification of payments of rural development policies
 - Calculation of indicators

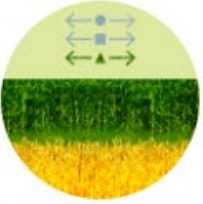


Source: our elaboration on direct survey.

Use of data



ASPETTI GENERALI



Aspetti orizzontali



Analisi regionali



Report regionali



Report annuali

ANALISI SETTORIALI



Coltivazioni Erbacee



Coltivazioni Arboree



Zootecnica



Altri comparti

Benchmarking



Farm dashboard → <http://cruscottoaziendalegaia.crea.gov.it>

Farms participating in FADN have a private access to their accounting results (personal ID and PIN). They can visualize their results, making comparison in different years and with the same farms (TF and ES).



Cruscotto Aziendale

Azienda: I

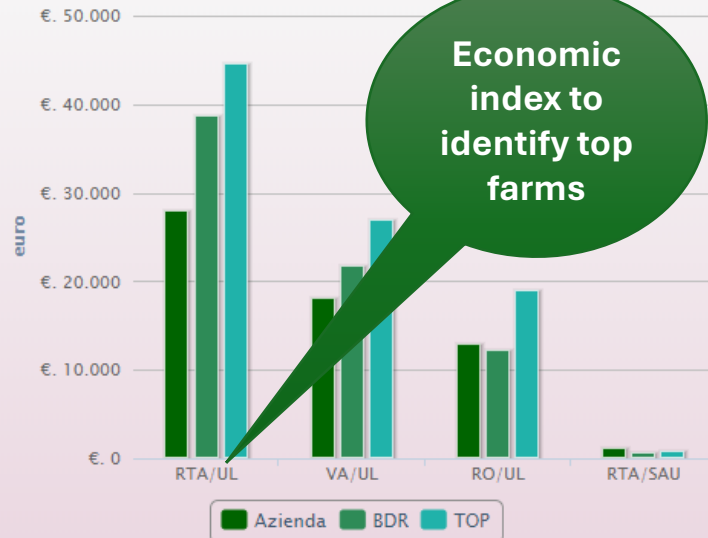
Equi anelita
ano (Grosseto)

Report di Bilancio | Indici Aziendali | Storico Bilancio

Riepilogo dati Azienda

Esercizio Contabile	2015
Azienda	FLU... e
Comune	Cas
Partita IVA	010
Cod. Fiscale	0107000030
Forma Giuridica	Società semplice
Forma Conduzione	Diretta con soli familiari
Reg. IVA Agricolo	Regime normale
Reg. IVA Attività Connesse	Attività connesse assenti
Ord. Tecnico Econ. Generale	6130 - Aziende con policoltura
OTE Particolare	Seminativi e vigneti combinati
Dimensione Economica	da 50.000 a meno di 100.000 euro
SAT (ettari)	48,6
SAU (ettari)	44,9
UBA (nr)	
Unità Lavoro (nr)	3
PS / RLS (€.)	58.974

Parametri Economici

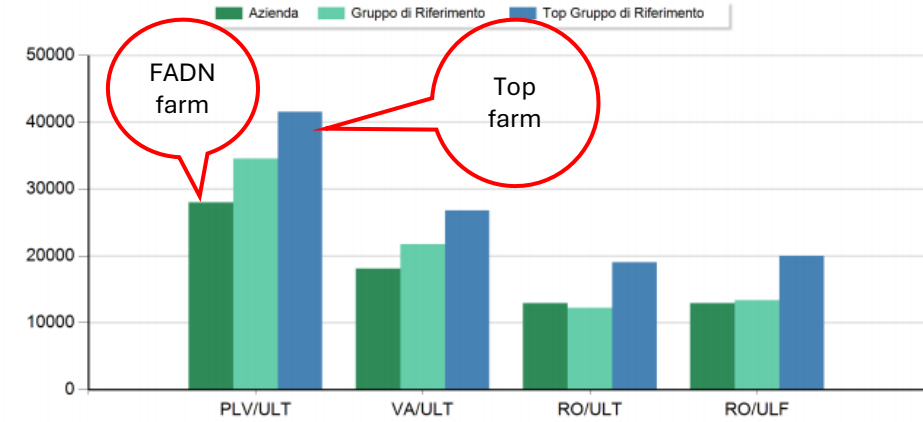


Nel grafico vengono confrontati i parametri economici dell'azienda con i dati medi della banca dati rica (BDR) ed il gruppo delle migliori aziende (TOP) individuate sul rapporto del reddito operativo / unità di lavoro, tutte appartenenti allo stesso Ordine Tecnico Economico (OTE), Gruppo Dimensione Economica e Circonscrizione Geografica.

Report di Bilancio | Indici Aziendali | Storico Bilancio

3 / 3

Confronto degli indici di produttività e redditività del lavoro



Confronto degli indici di produttività e redditività della terra

Azienda | Gruppo di Riferimento | Top Gruppo di Riferimento





**Thank you for your attention
sonia.marongiu@crea.gov.it**